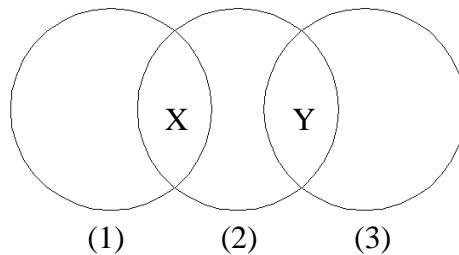


نقدم لكم بعض من المادة العلمية في صورة فيديوهات أو تدريبات على أن يستعين بها الطالب مع إتاحة المواقع العلمية المقررة من الوزارة من خلال أجهزة التابلت لمساعدتكم في اجتياز الامتحانات المقررة .

Unit three (excretion in animal – excretion in man)

Choose the correct answer:-

1- The opposite figure illustrates three excretory organ in the human body, if you knew the organ (1) has a role in the digestion process, and the organ (3) is the largest organ in the body, so :



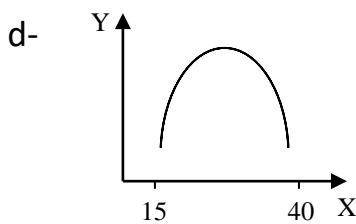
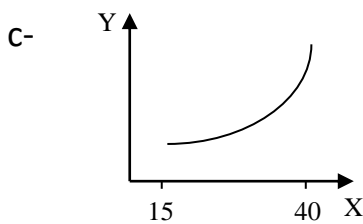
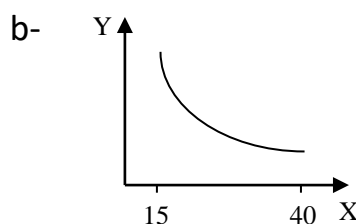
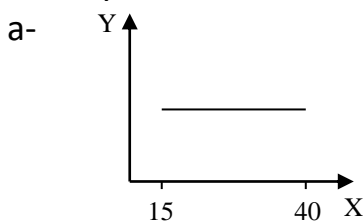
* The organ (2) represents

- a- liver. b- skin.
c- lung. d- kidney.

* The excretory product (x) and (y) representrespectively.

- a- water and mineral salt
b- mineral salt and water
c- poisonous substances and nitrogenous wastes
d- nitrogenous wastes and poisonous substances

2- Which of the following graph illustrates the relationship between the change in the rate of sweat secretion (Y) and the atmospheric temperature (X) in case of not doing any physical activity?.....



3- The hair hardens and splits in the absence of the

- a- sweat gland that is near from it.
b- melanin substance.
c- muscle that responsible for its movement.
d- fat gland that surrounded it.

4- The average number of nephrons in the two kidneys of human is about million(s).

- a- one
- b- three
- c- two
- d- five

5- Reabsorption of all molecules of glucose through nephric tube indicate that this process occurred by phenomenon.

- a- osmosis
- b- active transport
- c- selective permeability
- d- diffusion

6- Filtration rate can be increased by

- a- the afferent arteriolar resistance decrease.
- b- the afferent arteriolar resistance increase.
- c- the circulating blood volume increase.
- d- no correct answer

7- The amount of blood that is pumped by the heart and passes through the two kidney in one minute about liter(s)

- a- 6
- b- 5
- c- 2.4
- d- 1.2

8- The blood of the kidney failure is filtered through the dialysis, depending on thephenomenon.

- a- osmosis
- b- active transport
- c- selective permeability
- d- diffusion

9- Which of the following substances is (are) expected to found in higher percentage than normal in a blood sample of a person that suffers from the kidney failure?.....

- a- glucose.
- b- proteins.
- c- urea.
- d- salts.

10- In normal cases, the percentage of proteins in the renal artery isthat is the renal vein.

- a- higher than
- b- lower than
- c- equal to
- d- variable about